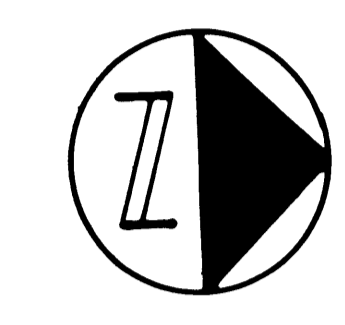


PLAT NO. 14 SAILFISH POINT P.U.D

LYING IN FRACTIONAL SECTIONS 8 & 17,
TOWNSHIP 38 SOUTH, RANGE 42 EAST,
MARTIN COUNTY, FL.

JANUARY, 1986

SHEET 2 OF 2



I, LOUISE V. ISAACS,
CLERK OF THE CIRCUIT COURT
OF MARTIN COUNTY, FLORIDA,
HEREBY CERTIFY THAT THIS
PLAT WAS FILED FOR RECORD
IN PLAT BOOK 10, PAGE 9
MARTIN COUNTY, FLORIDA,
PUBLIC RECORDS, THIS
DAY OF _____, 1986.

LOUISE V. ISAACS, CLERK
CIRCUIT COURT
MARTIN COUNTY, FLORIDA

BY: _____
FILE NO. _____

PLAT NO. 5 SAILFISH POINT P.U.D.
PLAT BOOK 8, PAGE 89

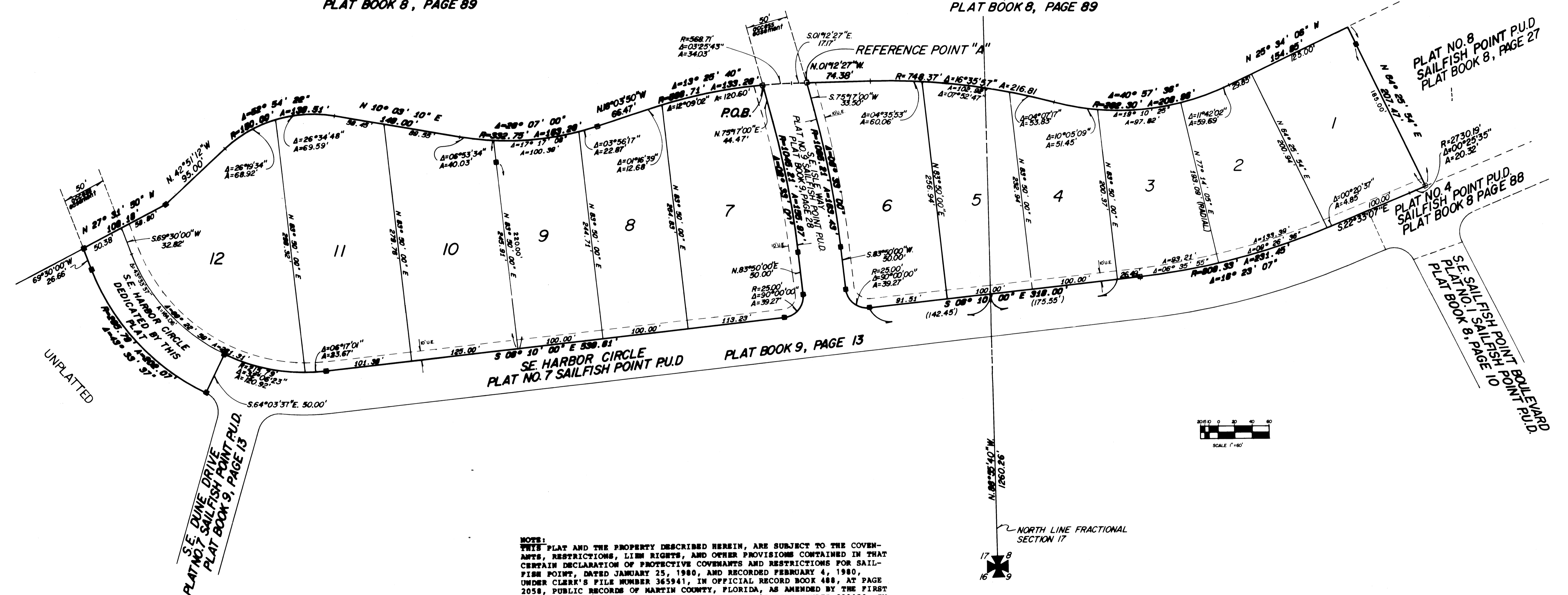
PLAT NO. 5 SAILFISH POINT P.U.D.
PLAT BOOK 8, PAGE 89

PLAT NO. 8 SAILFISH POINT P.U.D.
PLAT BOOK 8, PAGE 27

PLAT NO. 4 SAILFISH POINT P.U.D.
PLAT BOOK 8 PAGE 88

SE SAILFISH POINT BOULEVARD
PLAT NO. 1 SAILFISH POINT P.U.D.
PLAT BOOK 8, PAGE 10

SE HARBOR CIRCLE
PLAT NO. 7 SAILFISH POINT P.U.D.
PLAT BOOK 9, PAGE 13



NOTE:
THIS PLAT AND THE PROPERTY DESCRIBED HEREIN, ARE SUBJECT TO THE COVENANTS, RESTRICTIONS, LIEN RIGHTS, AND OTHER PROVISIONS CONTAINED IN THAT CERTAIN DECLARATION OF PROTECTIVE COVENANTS AND RESTRICTIONS FOR SAILFISH POINT, DATED JANUARY 25, 1980, AND RECORDED FEBRUARY 4, 1980, UNDER CLERK'S FILE NUMBER 365941, IN OFFICIAL RECORD BOOK 488, AT PAGE 2058, PUBLIC RECORDS OF MARTIN COUNTY, FLORIDA, AS AMENDED BY THE FIRST AMENDMENT TO DECLARATION, RECORDED UNDER CLERK'S FILE NUMBER 399150, IN OFFICIAL RECORD BOOK 513, AT PAGE 1094, PUBLIC RECORDS OF MARTIN COUNTY, FLORIDA, AND THE SECOND AMENDMENT TO DECLARATION, RECORDED UNDER CLERK'S FILE NUMBER 478598, IN OFFICIAL RECORD BOOK 573, PAGE 1112, PUBLIC RECORDS OF MARTIN COUNTY, FLORIDA, AND THE THIRD AMENDMENT TO DECLARATION, RECORDED UNDER CLERK'S FILE NUMBER 514594, IN OFFICIAL RECORD BOOK 602, PAGE 899, PUBLIC RECORDS OF MARTIN COUNTY, FLORIDA, AND THE FOURTH AMENDMENT TO DECLARATION, RECORDED UNDER CLERK'S FILE NUMBER 538378, IN OFFICIAL RECORD BOOK 622, PAGE 199, PUBLIC RECORDS OF MARTIN COUNTY, FLORIDA, TOGETHER WITH THE COVENANTS, RESTRICTIONS, AND OTHER PROVISIONS CONTAINED IN THAT CERTAIN SUPPLEMENTARY DECLARATION OF PROTECTIVE COVENANTS AND RESTRICTIONS FOR PLAT NO. 14 SAILFISH POINT P.U.D., RECORDED CONCURRENTLY WITH THE RECORDATION OF THIS PLAT.

NOTE:
THE FOLLOWING BUILDING SETBACK LINES SHALL APPLY TO ALL LOTS PLATTED HEREBY

1. FRONT SETBACK = 25' FROM RIGHT-OF-WAY LINE
2. SIDE SETBACK = 15' FROM PROPERTY LINE
3. REAR SETBACK FROM HARBOR = 50' FROM PROPERTY LINE

Bearing Base:
The North line of Fractional Section 17, is taken as being
N 88°55'40" W, and all other bearings are relative thereto.

□ = PERMANENT REFERENCE MONUMENT (PRM) FOUND
■ = PERMANENT REFERENCE MONUMENT (PRM) SET

LINDAN, BROWNING, FERRARI & HELLSTROM, INC. CONSULTING ENGINEERS, PLANNERS & SURVEYORS	
221 S.W. 27th JUPITER, FLORIDA 33408	221 OCEOLAND AVENUE STUART, FLORIDA 33404
117 SOUTH SECOND STREET PORT PINEACE, FLORIDA 33450	
2	2